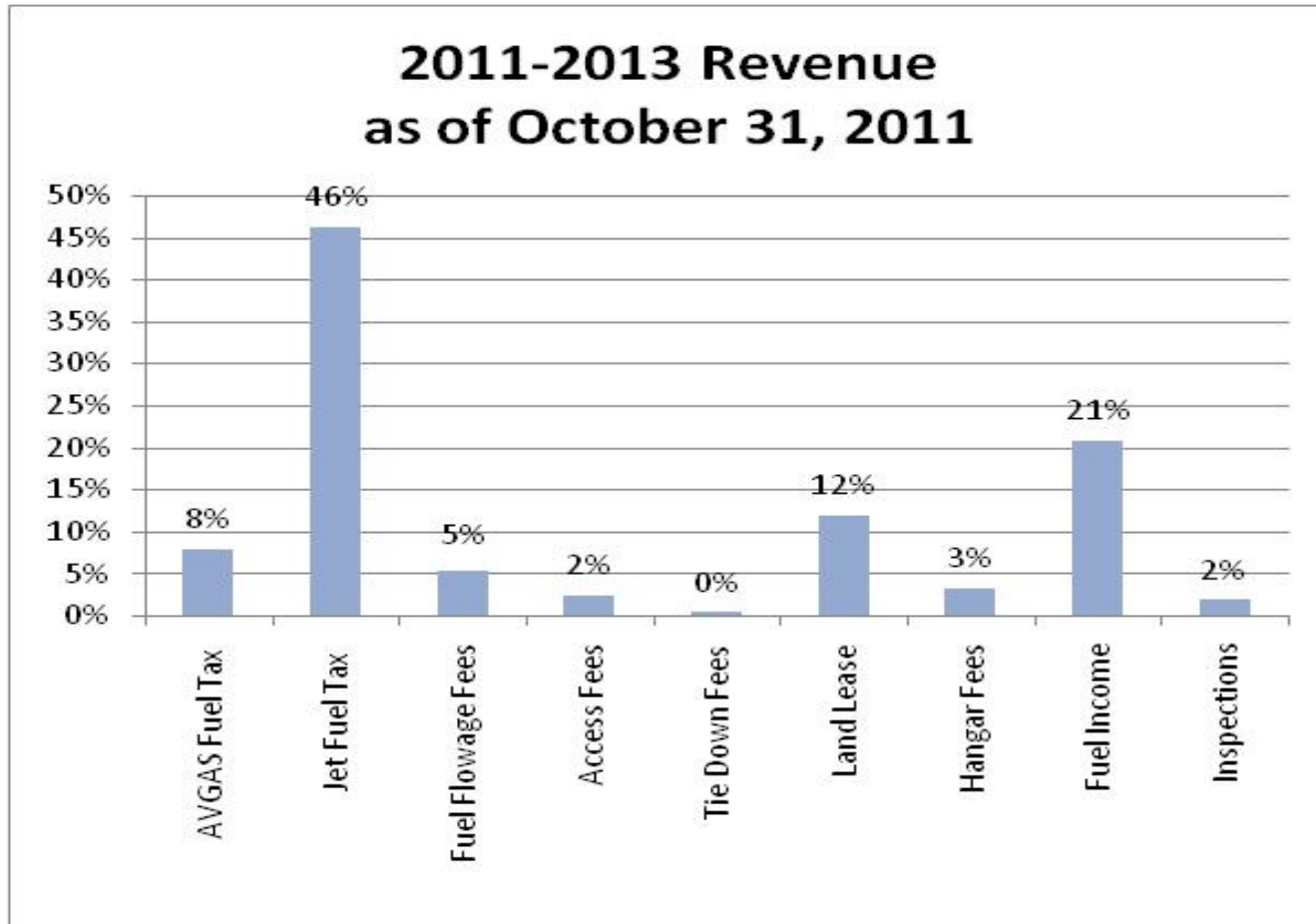




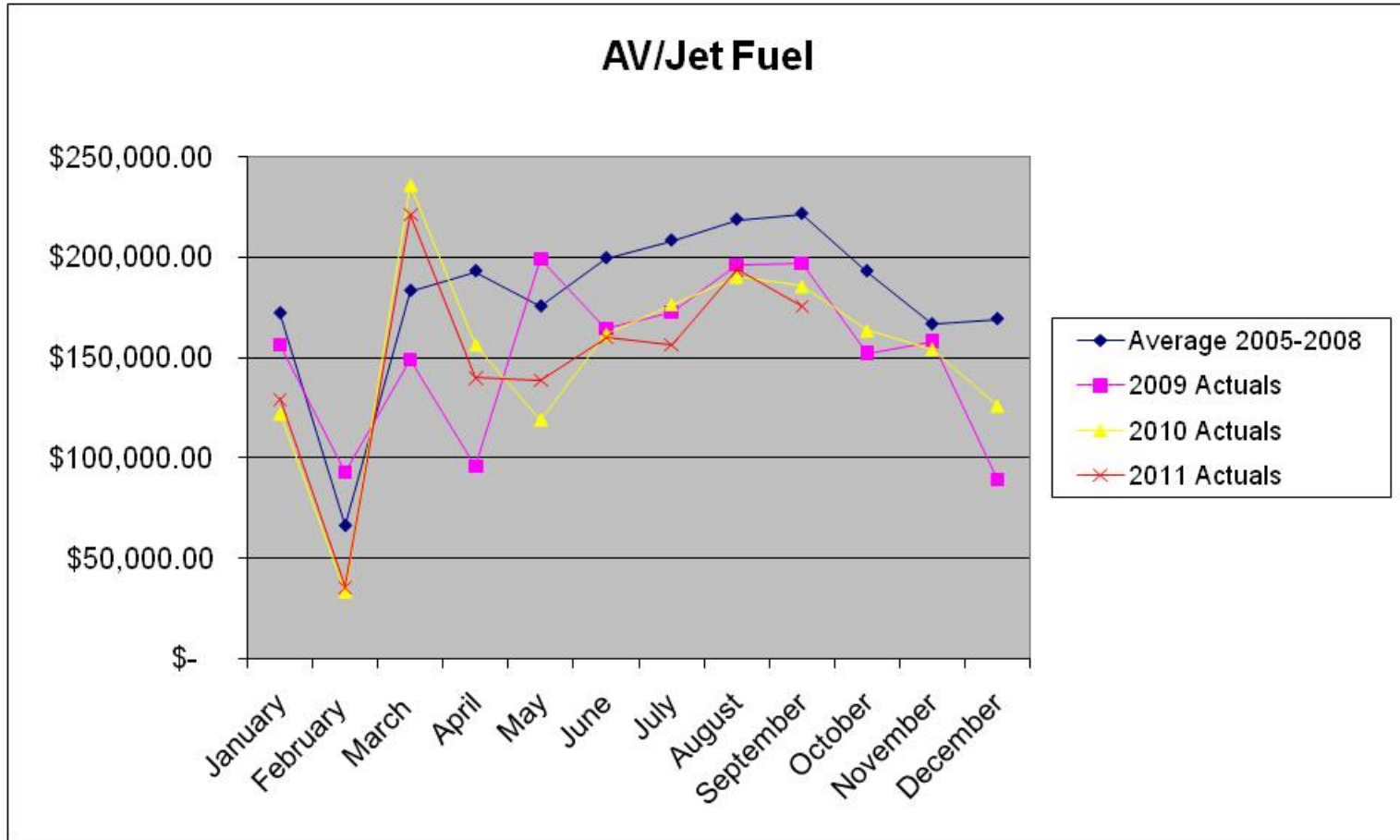
Monthly Business Report As of October 31, 2011

Oregon Department of Aviation Monthly Business Report

2011-13 Leading Operating Revenue Sources- thru October 31, 2011



Revenue of AV/Jet Fuel Tax





Actual Revenues Biennium to Date October 31, 2010

Oregon Department of Aviation

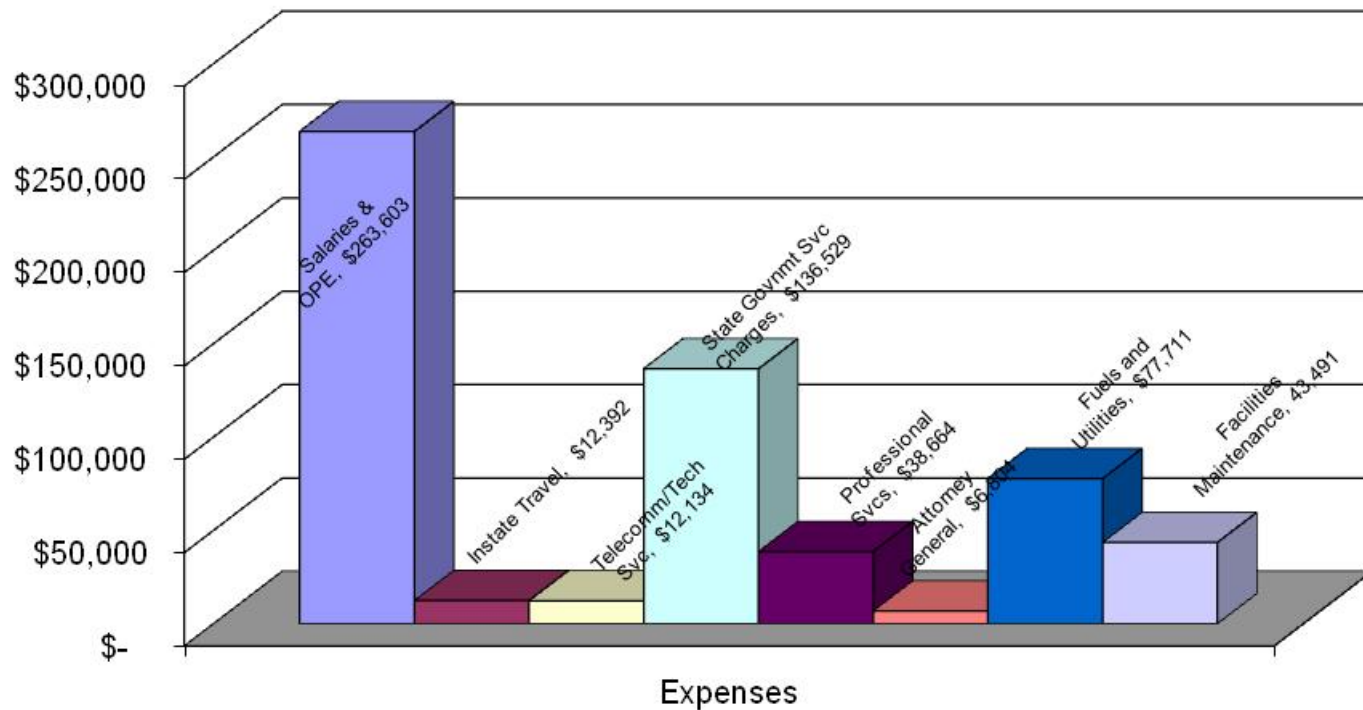
Operational Revenue

Biennium 2011-2013 – thru October 31, 2011 (17%)

Revenue:	Prior Biennium	Biennium to Date	Projected	Total
AVGAS Fuel Tax (Operations)	199,272	34,440		\$ 34,440
Jet Fuel Tax (Operations)	1,501,537	227,189	1,886,491	2,113,680
Motor Fuels Tax - MOGAS	243,933	0	2,400	2,400
Fuels Tax Refund - DMV	1,329	65		65
Airport Site Investigations	4,425	1,875		1,875
Airport License Fees	3,969	0		0
Airport Dealer License Fees	2,250	0		0
Connect Oregon Administration	150,000	0		0
Fuel Flowage Fees	130,722	23,155		23,155
Access Fees	175,420	11,140		11,140
Tie Down Fees	12,145	3,161		3,161
Land Lease	334,007	53,563	451,256	504,819
Hangar Fees	157,829	12,639		12,639
Sale of Utilities	1,482	414		414
5010 Inspections	24,350	6,500		6,500
Management Fees (Port of Portland for Mulino)	450,000	0		0
Property Tax Reimbursed	21,311	0		0
Fuel Income	254,287	78,266		78,266
Misc. Receipts	22,099	173	1,215,893	1,216,066
Transfer in from other fund (702,000 PMP)	704,344	4,441	25,000	29,441
Transfer in from State Police	4,027	0		0
Transfer out to Other Funds (Operations)	(5,702)	(110)		(110)
Transfer out to Military	(25,876)	0		\$ -
TOTAL REVENUE	\$ 4,393,035	\$ 456,912	\$ 3,581,040	\$ 4,037,952

Cost Drivers – 2011-13 Biennium as of October 31, 2011

Operations Cost Drivers - Year to date biennium 2011-13





Actual Operating Expenditures Biennium to Date- 2011-13

Operating Expenditures:	Thru Oct 2011 Actual (17%)	Projected	Total Biennium
<i>Personal Services:</i>			
Salaries and Other Payroll Expenses	\$ 263,603	1,528,532	\$ 1,792,135
<i>Services & Supplies:</i>			
Instate Travel	\$ 12,392		12,392
Out of State Travel	1,851		1,851
Employee Training	1,964		1,964
Office Expenses	6,029		6,029
Telecomm/Tech Svcs and Supplies	\$ 12,134		12,134
State Government Service Charges	\$ 136,529		136,529
Data Processing	3,969		3,969
Publicity & Publications	1,689		1,689
Professional Services	\$ 38,664		38,664
IT Professional Services	0		0
Attorney General Legal Fees	\$ 6,804		6,804
Employee Recruitment and Development	2,455		2,455
Dues and Subscriptions	14		14
Facilities Rent and Taxes	24,805		24,805
Oil	0		
Gas Pumps, Tanks & Fuel	58,916		
Fuel Charges - Vehicles	6,355		
Garbage Services	268		
Heating Fuel - Stove Oil	137		
Electrical	10,980		
Water & Sewer	1,055		
Fuels and Utilities	\$ 77,711		77,711
Facilities Maintenance	43,491		43,491
Agency Program Related S&S	5,055		5,055
Other Services & Supplies	2,189		2,189
Expendible Property \$250-\$5000	675		675
IT Expendible Property	16,827		16,827
Other Capital Outlay	0		0
Special Payments (Default)	0		0
subtotal	0	1,384,918	1,384,918
<i>Burn Rate:</i>	<i>18%</i>		
TOTAL EXPENDITURES	\$ 658,851	\$ 2,913,450	\$ 3,572,301



Search & Rescue

Oregon Department of Aviation
 Search and Rescue Program
Biennium 2011-2013 - thru October 31, 2011 (17%)

	Prior Biennium	Biennium to Date	Projected	Total
Revenue:				
Beginning Balance	\$ 27,474	\$ 17,836		\$ 17,836
Pilot Registration Fees	\$ 109,674	\$ 16,707	\$ 92,397	\$ 109,104
Transfer Out to Military	(51,751)	0	(51,751)	(51,751)
TOTAL REVENUE	\$ 85,397	\$ 34,543	\$ 40,646	\$ 75,189
	<i>Revenue Rate</i>	<i>22%</i>		
Expenditures:				
<i>Personal Services:</i>				
Salaries and Other Payroll Expenses	\$ 70,769	\$ 9,326	\$ 36,755	\$ 46,081
<i>Services & Supplies:</i>				
Fuels, Utilities & Printing	\$ 6,160	\$ 2,045	\$ 5,775	\$ 7,820
TOTAL EXPENDITURES	\$ 76,929	\$ 11,372	\$ 42,530	\$ 53,902
	<i>Burn Rate:</i>	<i>21%</i>		
PROFIT/ (LOSS)	\$ 8,468	\$ 23,171	\$ (1,884)	\$ 21,287



Aircraft Registration

Oregon Department of Aviation
 Aircraft Registration
Biennium 2011-2013 – thru October 31, 2011 (17%)

	Prior Biennium	Biennium to Date	Projected	Total
Revenue:				
Beginning Balance	\$ 38,882	\$ 315,371		\$ 315,371
Aircraft Registration Fees	\$ 557,896	\$ 81,125	\$ 438,695	\$ 519,820
Transfer Out to Operations for Match	\$ 171,328	\$ 77,443	\$ 411,428	\$ 488,872
TOTAL REVENUE	\$ 425,450	\$ 319,053	\$ 27,267	\$ 346,319
Expenditures:				
<i>Personal Services:</i>				
Salaries and Other Payroll Expenses	\$ 71,627	\$ 11,038	\$ 45,074	\$ 56,112
<i>Services & Supplies:</i>				
Fuels and Utilities	\$ 1,570		\$ 10,637	\$ 10,637
TOTAL EXPENDITURES	\$ 73,197	\$ 11,038	\$ 55,711	\$ 66,749
	<i>Burn Rate:</i>	<i>17%</i>		
PROFIT/ (LOSS)	\$ 352,253	\$ 308,015	\$ (28,444)	\$ 279,570



Pavement Maintenance Program

Oregon Department of Aviation
Pavement Maintenance Program
Biennium 2011-2013 – thru October 31, 2011 (17%)

	Prior Biennium	Biennium to Date	Projected	Total
Revenue:				
Beginning Balance	\$ 924,508	\$ 508,258		\$ 508,258
Other Revenue	\$ 102,100	\$ -	\$ -	\$ -
Transfer out to Military	(25,876)	0		-
Transfer in-Fuel Tax Revenue	\$ 1,900,141	\$ 296,078	\$ 1,506,297	\$ 1,802,375
Transfer Out to Operations	\$ (715,556)	\$ (4,331)	\$ -	\$ (4,331)
TOTAL REVENUE	\$ 2,211,193	\$ 800,005	\$ 1,506,297	\$ 2,306,302
Expenditures:				
<i>Personal Services:</i>				
Salaries and Other Payroll Expenses	\$ 6,576	\$ 15,880	\$ 94,948	\$ 110,828
<i>Services & Supplies:</i>				
Professional Services	\$ 720,698	\$ 5,243	\$ 1,791,444	\$ 1,796,688
Attorney General Legal Fees	\$ 3,393	\$ 815	\$ -	\$ 815
TOTAL EXPENDITURES	\$ 730,668	\$ 21,939	\$ 1,886,392	\$ 1,908,331
	<i>Burn Rate:</i>	<i>1%</i>		
PROFIT/ (LOSS)	\$ 1,480,525	\$ 778,066	\$ (380,095)	\$ 397,971



Cash and Limitation balances 2011-13 (as of November 22, 2011)

Agy 109-Dept of Aviation-Available AY 11-13 Limitation Balances on SFMA on 11/22/11					Screen 89 As of 11/22/11 Year 12	17000	18000		
Appropriation#	Airport or Area	Appn Year	Limitation	Calendar As of 11/22/11 Amount Spent	Calendar Date As of 11/22/11 Available Limitation	D23 Fund GL 0070 & 0065 Fund Cash Balance	Cash Account	Cash Account	
State Limitations									
30000	Operations	2013	3,456,101.00	658,850.87	2,797,250.13	4010	997,088.47	997,088.47	
31000	Search & Rescue	2013	53,900.00	11,371.57	42,528.43	4023	13,804.16	13,804.16	
34000	GA Entitlement-State	2013	180,964.00	2,818.49	178,145.51	4015	6.93	6.93	
36000	Aircraft Registration	2013	66,749.00	11,038.14	55,710.86	4011	372,219.01	372,219.01	
37000	Pavement Maintenance	2013	1,908,331.00	21,938.86	1,886,392.14	4012	1,740,061.64	1,740,061.64	
Capital Construction-State Side									
33014	Aurora Land & Taxiway	2009	229,306.00	226,609.68	2,696.32	3114	0.00	0.00	
33015	Bandon Apron & Taxiway Relocation	2009	47,368.00	15,960.70	31,407.30	3115	0.00	0.00	
33016	Cottage Grove Runway...	2009	47,894.00	40,884.74	7,009.26	3116	0.00	0.00	
33017	Chiloquin Rehab, Obstruct & Light	2009	33,947.00	0.00	33,947.00	3117	0.00	0.00	
33019	Lebanon Runway Safety Area...	2009	259,808.00	177,639.09	82,168.91	3119	0.00	0.00	
33020	Joseph Capital Construction	2011	127,632.00	70,008.58	57,623.42	3120	0.00	0.00	
33901	Aurora Air Traffic Control Tower	2011	0.00	0.00	0.00	3191	0.00	0.00	
Federal Limitations									
60000	Operations-Federal Funds	2013	500,000.00	84,384.77	415,615.23	5000	(3,301.64)	(3,301.64)	
64000	GA Entitlement-Federal Funds	2013	2,772,055.00	53,550.81	2,718,504.19	5005	(4,220.36)	(4,220.36)	
Capital Construction-Federal Side									
65014	Aurora Land Acquisition & Taxiway	2009	4,356,816.00	4,305,575.61	51,240.39	5114	0.00	0.00	
65015	Bandon Apron & Taxiway Relocation	2009	900,000.00	303,252.06	596,747.94	5115	164,732.94	164,732.94	
65016	Cottage Grove Runway Fencing & Lig	2009	910,000.00	771,128.33	138,871.67	5116	0.67	0.67	
65017	Chiloquin Aron Rehab Obstruction..	2009	645,000.00	0.00	645,000.00	5117	0.00	0.00	
65019	Lebanon Runway Safety Area...	2009	2,846,353.00	2,511,573.27	334,779.73	5119	(1.27)	(1.27)	
65020	Joseph Runway Safety Area...	2011	2,500,000.00	1,330,150.48	1,169,849.52	5120	(421.79)	(421.79)	
				10,596,736.05	11,245,487.95	Totals	3,279,968.76	3,266,164.60	13,804.16



All Other State Owned Airport Profit and Loss Statement

Oregon Department of Aviation State Owned Airports

	Prior Biennium as of June 30, 2011 with period 13				Current Biennium 7/1/11 thru 10/31/2011			
	Revenues	Expenditures		Profit/(Loss)	Revenues	Expenditures		Profit/(Loss)
		Prsnl Srvc	Srvcs & Sppl			Prsnl Srvc	Srvcs & Sppl	
R03 ALKALI LAKE STATE AIRPORT	\$650	\$1,405	\$3,019	(\$3,773)	\$0	\$376	\$1,483	(\$1,859)
UAO AURORA STATE AIRPORT	\$350,054	\$27,540	\$180,405	\$142,108	\$47,099	\$3,270	\$34,214	\$9,616
S05 BANDON STATE AIRPORT	\$15,179	\$9,607	\$30,022	(\$24,451)	\$2,760	\$3,861	\$9,336	(\$10,437)
5S6 CAPE BLANCO STATE AIRPORT	\$7,093	\$2,232	\$11,272	(\$6,412)	\$1,973	\$170	\$1,334	\$468
CZK CASCADE LOCKS STATE AIRPORT	\$200	\$2,215	\$8,660	(\$10,675)	\$14	\$247	\$1,391	(\$1,625)
2S7 CHILOQUIN STATE AIRPORT	\$4,459	\$3,630	\$7,676	(\$6,847)	\$766	\$201	\$3,919	(\$3,354)
3S9 CONDON STATE AIRPORT	\$3,658	\$2,901	\$5,953	(\$5,196)	\$263	\$1,314	\$960	(\$2,011)
61S COTTAGE GROVE STATE AIRPORT	\$56,827	\$20,338	\$82,475	(\$45,987)	\$31,634	\$3,276	\$21,956	\$6,402
5S2 CRESCENT LAKE STATE AIRPORT	\$0	\$1,645	\$2,720	(\$4,365)	\$0	\$15	\$1,195	(\$1,210)
7S5 INDEPENDENCE STATE AIRPORT	\$177,147	\$7,785	\$27,054	\$142,308	\$21,948	\$785	\$8,344	\$12,819
4S3 JOSEPH STATE AIRPORT	\$109,096	\$7,775	\$151,462	(\$50,140)	\$16,326	\$5,630	\$19,844	(\$9,147)
S30 LEBANON STATE AIRPORT	\$49,542	\$10,211	\$21,670	\$17,661	\$8,402	\$3,668	\$7,326	(\$2,591)
26U MCDERMOTT STATE AIRPORT	\$688	\$1,984	\$7,141	(\$8,438)	\$191	\$2,275	\$3,073	(\$5,157)
00S MCKENZIE BRIDGE STATE AIRPORT	\$550	\$1,430	\$1,256	(\$2,135)	\$0	\$423	\$0	(\$423)
4S9 MULINO AIRPORT	\$741,448	\$21,588	\$221,402	\$498,458	\$50,188	\$2,785	\$46,453	\$950
3S7 NEHALEM BAY STATE AIRPORT	\$0	\$1,902	\$4,878	(\$6,780)	\$0	\$0	\$0	\$0
5S0 OAKRIDGE STATE AIRPORT	\$2,176	\$2,348	\$5,092	(\$5,264)	\$0	\$588	\$336	(\$923)
28U OWYHEE RESERVOIR STATE AIRPORT	\$0	\$302	\$707	(\$1,010)	\$0	\$0	\$0	\$0
PFC PACIFIC CITY STATE AIRPORT	\$900	\$1,599	\$6,853	(\$7,552)	\$0	\$234	\$253	(\$486)
24S PINEHURST STATE AIRPORT	\$180	\$1,341	\$2,479	(\$3,640)	\$180	\$15	\$9	\$156
64S PROSPECT STATE AIRPORT	\$6,259	\$6,393	\$17,071	(\$17,205)	\$0	\$162	\$3,094	(\$3,257)
REO ROME STATE AIRPORT	\$0	\$732	\$2,152	(\$2,885)	\$0	\$0	\$739	(\$739)
8S3 SANTIAM JUNCTION STATE AIRPORT	\$550	\$542	\$851	(\$843)	\$0	\$235	\$0	(\$235)
S45 SILETZ BAY STATE AIRPORT	\$14,775	\$3,435	\$15,223	(\$3,883)	\$2,273	\$2,037	\$4,536	(\$4,301)
3S6 TOKETTEE STATE AIRPORT	\$0	\$630	\$2,928	(\$3,558)	\$238	\$0	\$4,414	(\$4,176)
5S4 TOLEDO STATE AIRPORT	\$2,682	\$1,665	\$2,127	(\$1,109)	\$0	\$381	\$144	(\$525)
R33 WAKONDA BEACH STATE AIRPORT	\$1,722	\$1,154	\$2,418	(\$1,849)	\$0	\$395	\$102	(\$497)
35S WASCO STATE AIRPORT	\$2,659	\$3,002	\$4,345	(\$4,687)	\$388	\$2,624	\$963	(\$3,198)
State Owned Airport TOTALS	\$1,548,495	\$147,332	\$829,310	\$571,853	\$184,643	\$34,967	\$175,417	(\$25,741)